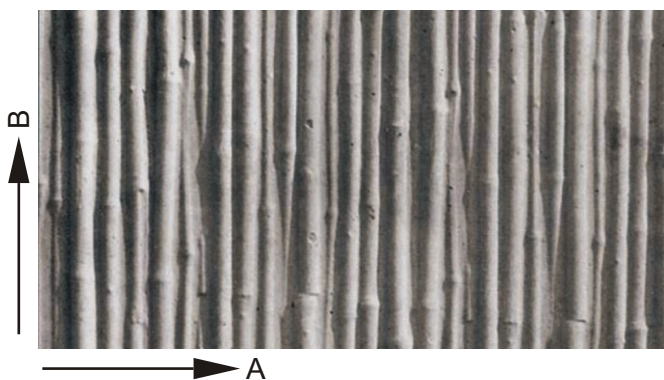
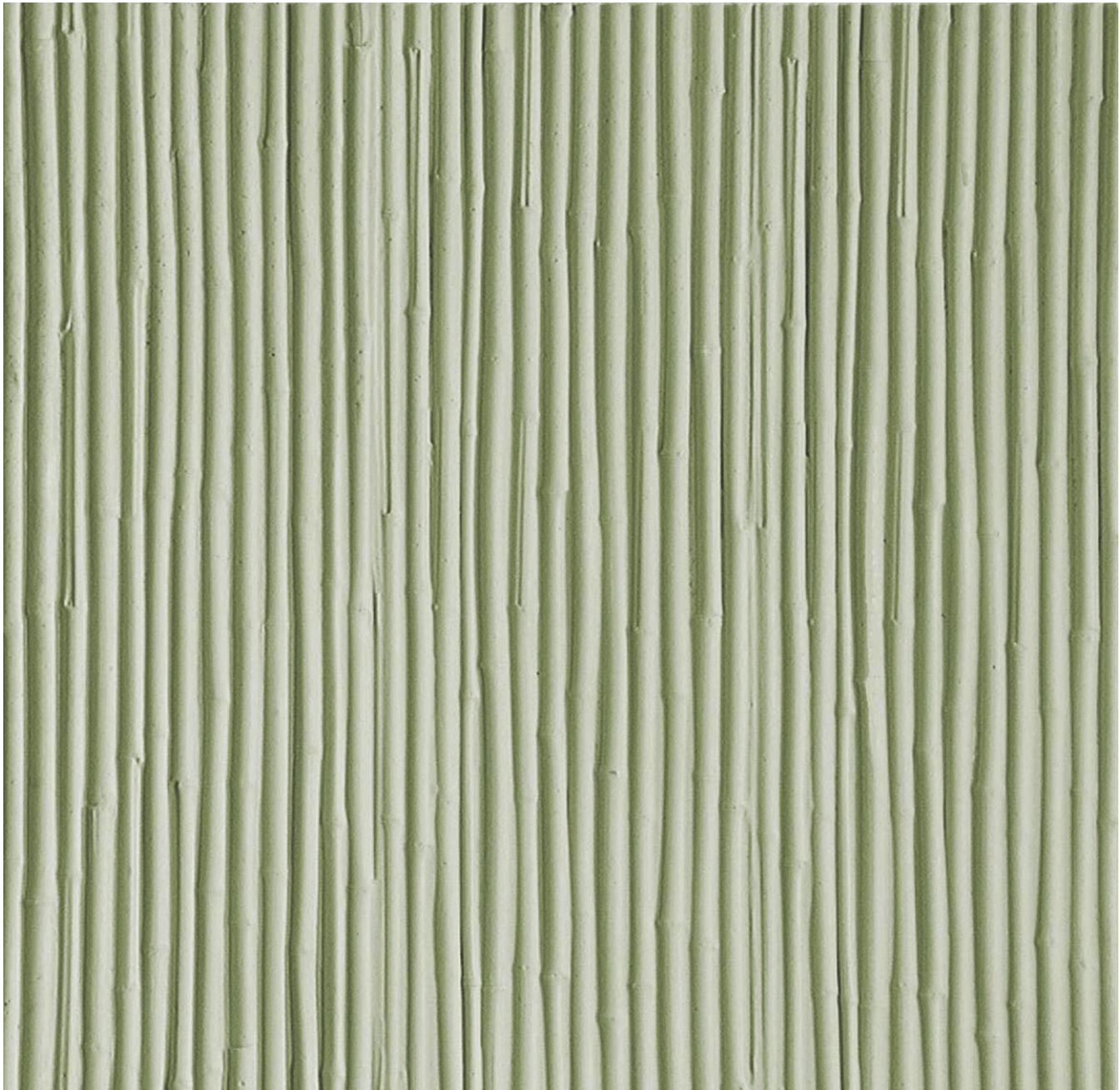


náhľad na 1m<sup>2</sup> plochy vzoru:



**rozmery matrice / mat sizes** [mm]

A	1000	1200
---	------	------

B	6000	3500
---	------	------

**hrúbka matrice / mat thickness** [mm]

	20,0
--	------

**hmotnosť matrice / mat weight** [kg/m<sup>2</sup>]

	13,5
--	------

**rozmerné tolerancie / dimensional tolerances**

A/B	[%]	± 1
-----	-----	-----

hrúbka/thickness	[mm]	± 2
------------------	------	-----

**tvrdosť A / shore hardness A**

	65-70
--	-------

**tepelná odolnosť / heat resistance** [°C]

	+ 80
--	------

