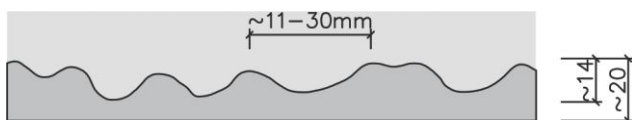
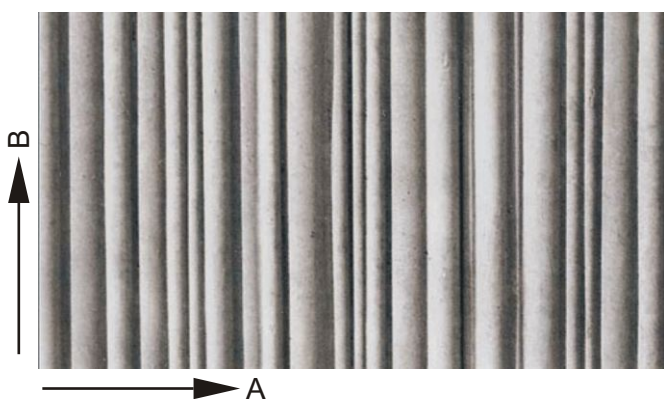
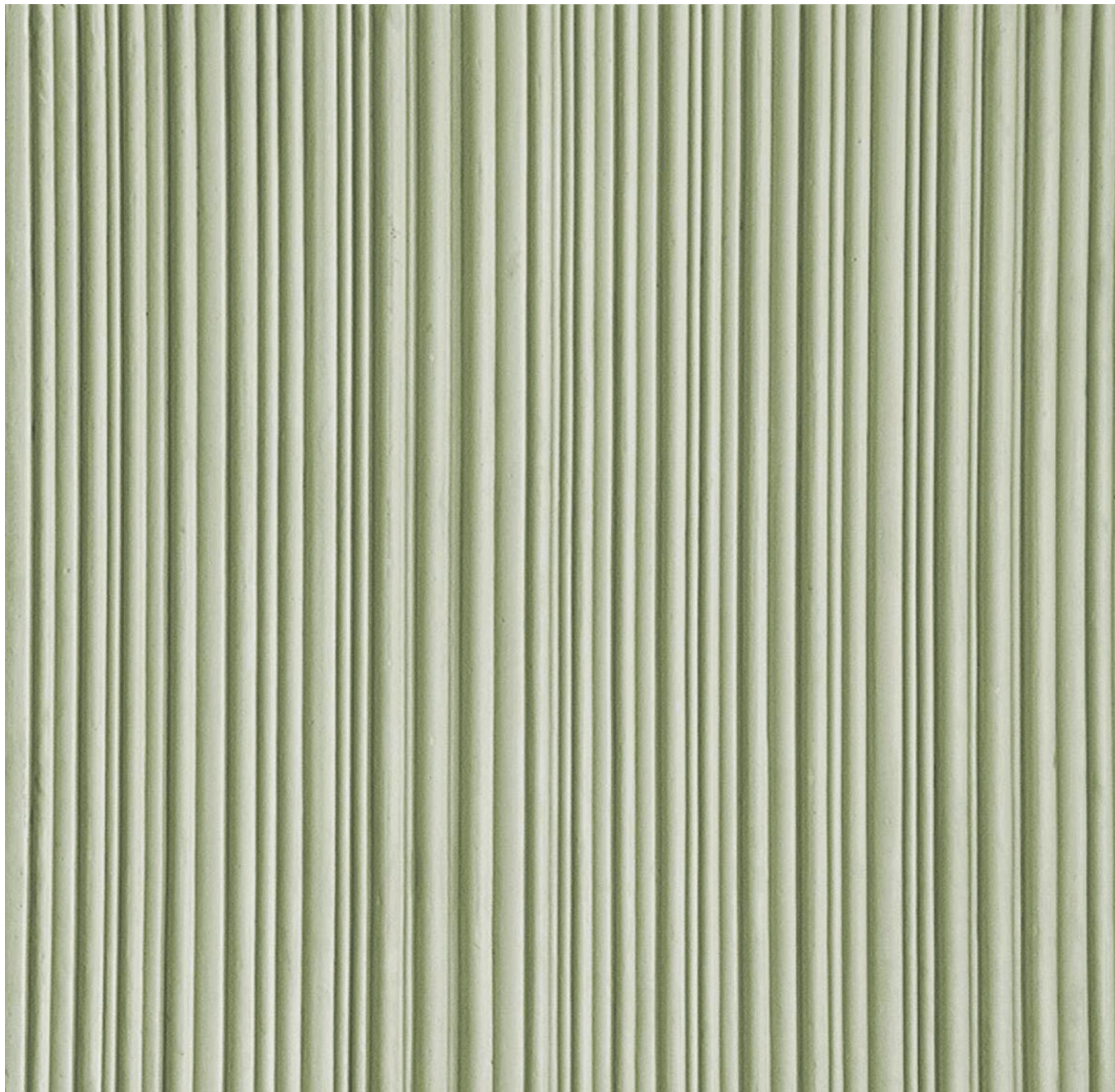


náhľad na 1m² plochy vzoru:



rozмеры matrice / mat sizes [mm]

A 1000

B 3300

hrúbka matrice / mat thickness [mm]

20,0

hmotnosť matrice / mat weight [kg/m²]

16,0

rozměrové tolerancie / dimensional tolerances

A/B [%] ± 1

hrúbka/thickness [mm] ± 2

tvrdosť A / shore hardness A

65-70

tepelná odolnosť / heat resistance [°C]

+ 80