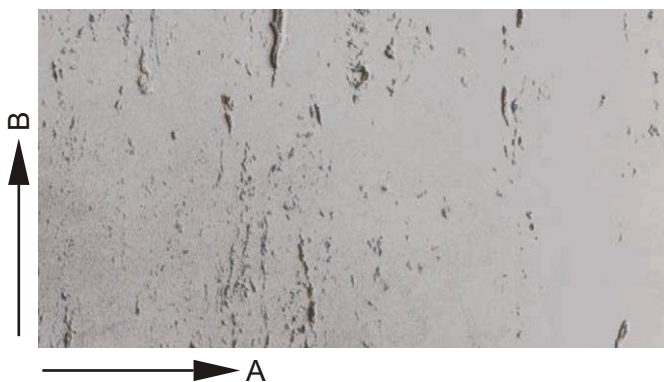
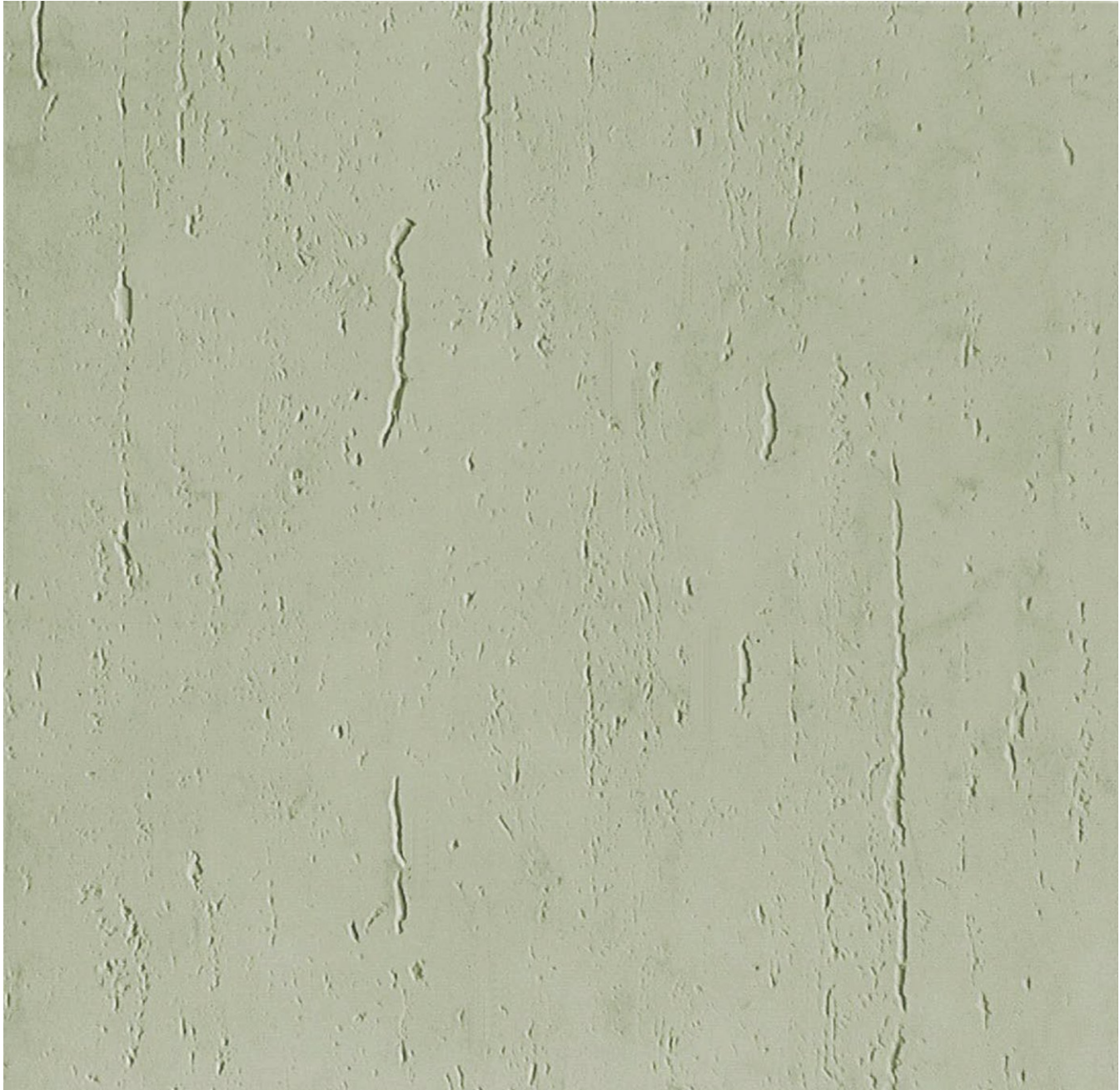


náhľad na 1m<sup>2</sup> plochy vzoru:



<b>rozmery matrice / mat sizes</b>	[mm]
A	2700
B	4500

<b>hrúbka matrice / mat thickness</b>	[mm]
	5,0

<b>hmotnosť matrice / mat weight</b>	[kg/m <sup>2</sup> ]
	8,0

<b>rozmerné tolerancie / dimensional tolerances</b>	
A/B	[%] ± 1
hrúbka/thickness	[mm] ± 2

<b>tvrdosť A / shore hardness A</b>	
	65-70

<b>tepelná odolnosť / heat resistance</b>	[°C]
	+ 80

