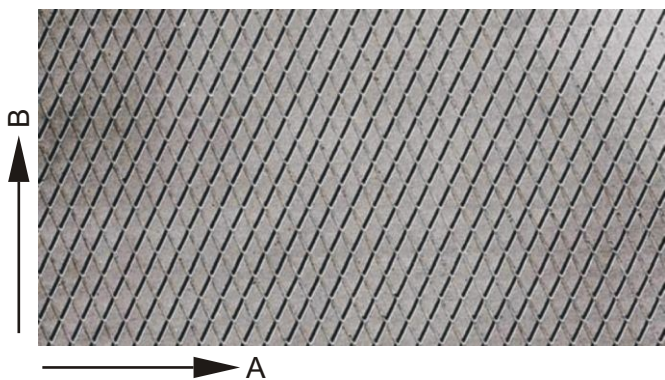
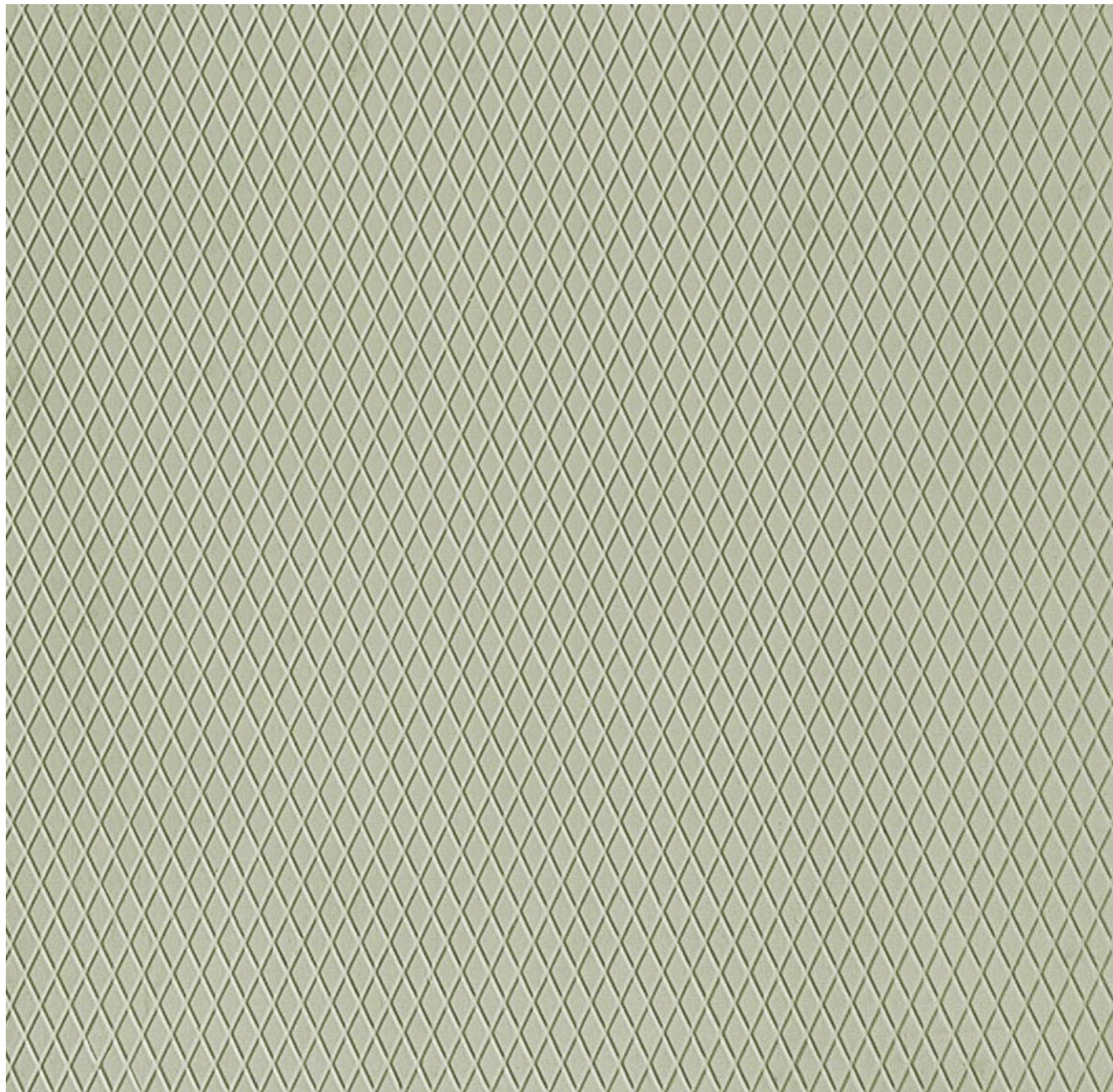


náhľad na 1m<sup>2</sup> plochy vzoru:



**rozмеры matrice / mat sizes** [mm]

A 1250 1500 2500

B 7500 7500 7500

**hrúbka matrice / mat thickness** [mm]

8,0

**hmotnosť matrice / mat weight** [kg/m<sup>2</sup>]

9,0

**rozměrové tolerance / dimensional tolerances**

A/B [%] ± 1

hrúbka/thickness [mm] ± 2

**tvrdosť A / shore hardness A**

65-70

**tepelná odolnosť / heat resistance** [°C]

+ 80

